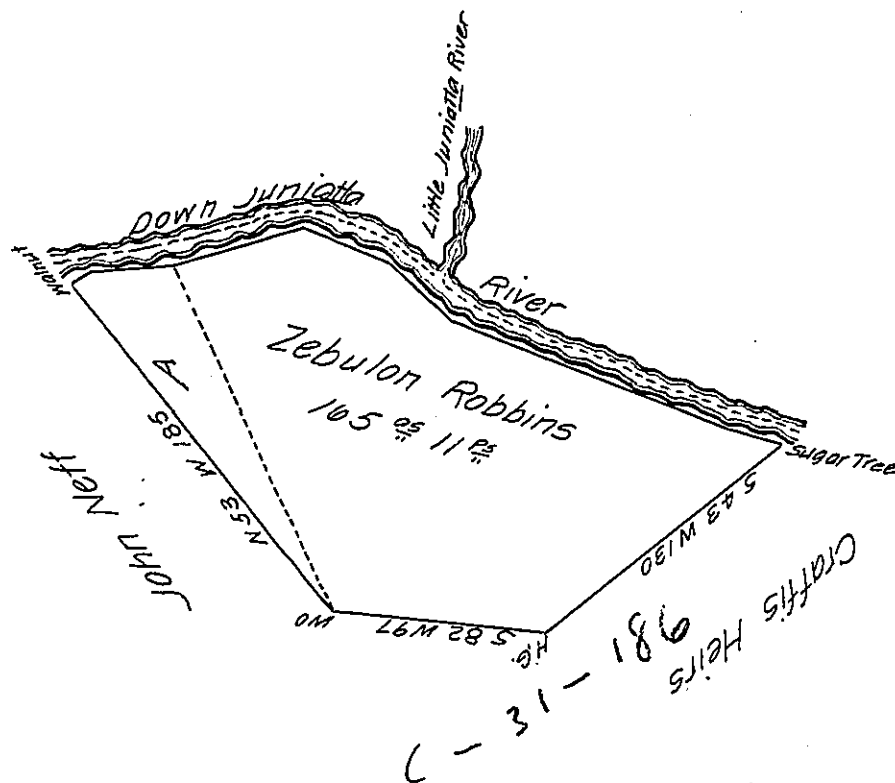


Courses and distances  
down the River from  
the Walnut to the Sugar Tree

- N 60 E 11 1/2
- N 73 E 36
- N 64 E 61
- S 78 E 40
- S 58 E 37
- S 83 E 131
- S 89 E 33



Situate in the Township and County of Huntingdon. Containing as originally returned by George Woods Esquire when Deputy Surveyor of this District one hundred and twenty seven acres and an half now containing one hundred and sixty five acres eleven Perches and allowance by a resurvey made the 31<sup>st</sup> Day of October A.D. 1801 in pursuance of a Writ of Partition issued out of the Court of Common Pleas of Huntingdon County returnable to November Term 1801 wherein John Neff was Plaintiff and the Heirs of Peter Crafft's Dec<sup>d</sup> were Defendants. Surveyed in pursuance of a warrant to Zebulon Robbins dated the 10<sup>th</sup> day of September 1762

Samuel Cochran Esq<sup>r</sup> S.G.

John Canan

Note - The Triangular piece marked A containing twenty one acres one hundred and forty two Perches and allowance, shows the part taken off a survey in the name of John Lowrey now the property of John Neff by the resurvey.

J. Canan

IN TESTIMONY that the above is a copy of the original remaining on file in the Department of Internal Affairs of Pennsylvania, made conformably to an Act of Assembly approved the 16th day of February, 1833, I have hereunto set my Hand and caused the Seal of said Department to be affixed at Harrisburg, this twenty sixth day of September 1906

*Loac R Pearson*  
Secretary of Internal Affairs.